

ANTI-BANDIT DOORS **BROCHURE**

Special door sizes and configurations are available on request.

Bullet resistant doors can be manufactured to provide up to 2 hour fire-resistance as well as blast protection.

No material can be considered absolutely safe against bullets, since repeated attacks will eventually break them down.

The various levels are meant to provide protection against various types of firearms, ranging from small guns to high-powered rifles. Bullet resistant doors and screens are available in various finishes or have full glass-vision.

Anti-bandit and bullet resistant doors are a crucial means to offer additional safety to any building. At Stronghold, we offer bullet resistant doors that are available in various levels of protection to suit your requirements.

Anti-Bandit security doors should be able to resist different calibre ammunition. Typically, when it comes to bullet resistance, there are four different categories:

1. G1 Anti Bandit – Resisting up to 9mm Parabellum (28mm Glass View Panel)
2. G2 Anti Bandit – Resisting up to 357 Magnum & 12 Gauge shotgun (38mm Glass View Panel)
3. G3 Anti Bandit – Resisting up to AK47 Rifle or similar (53mm Glass View Panel)
4. G4 Anti Bandit – Resisting up to R1 Assault rifle 7.56 calibre (77mm Glass View Panel)

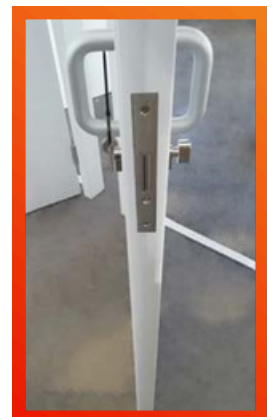
OPTIONAL EXTRAS

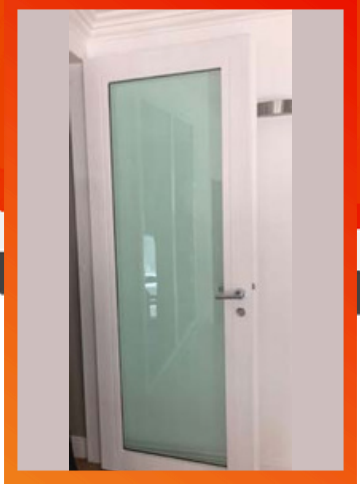
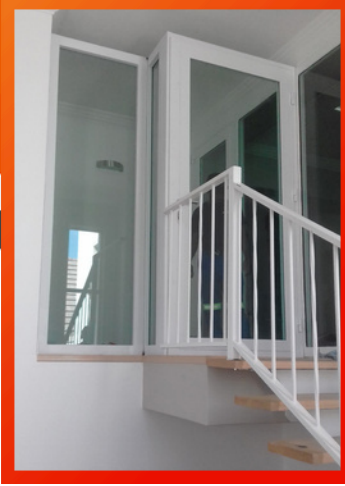
- Steel Cladding for External Doors
- Access Control
- View Panel
- Push and Kick Plates
- Wood Veneers and Laminates for Internal Doors
- High-Security Locking
- BR Glass Doors and Walls
- Door Closers

CUSTOMISATION

Special door sizes and configurations are available on request.

Speak to our sales team for customised anti-bandit doors to suit your own application or architectural specification.

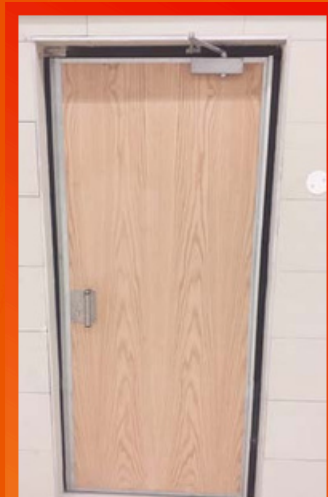
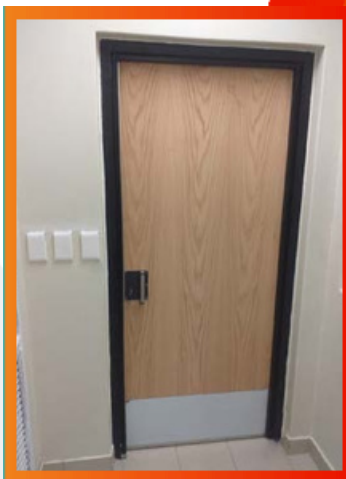




BULLET RESISTANT GLASS

Also known as Transparent Armour - comes in a variety of grades. Each one is capable of withstanding different intensities of attack. Ballistic glass is capable of withstanding Armour piercing bullets and threats from 20mm fragmentation (FSP).

To safeguard certain areas in your business or residential property from attack, without feeling closed in by walls, open your space with Transparent Armour (Bullet Resistant Glass)
Due to the weight and difficult handling, specialised installation is required for Transparent Armour walls and doors and is therefore, limited to 28mm.



Business Address:
15 Derrick Rd,
Spartan, Kempton Park
1619

CONTACT INFORMATION

Postal Address: Stronghold Fire & Security cc
Postnet Suite 316
Private Bag X1
East Rand
1462

Tel: 011 822 2570

Sales Team:

Elmarie: 082 566 2913
sales@strongholdfs.co.za

Cecilia: 067 415 5833
sales1@strongholdfs.co.za

Ashkia: 082 697 6252
sales2@strongholdfs.co.za

Operations:
Trevor: 078 067 0434
ops@strongholdfs.co.za

Website: www.strongholdfs.co.za

VAT No: 4730232149

Registration No: 2006/161602/23

Products and Services

- Fire Doors • Escape Doors
- Transformer Doors • Hospital Doors
- Anti-bandit Doors • Seclusion Doors
- Lead Lined Doors • Hospitality Doors
- Steel Doors • Acoustic Doors
- Ironmongery • Insulated Doors
- Door Hardware • Security Doors

Services

Site Surveys
Fire + Escape Door Maintenance
Door Installations
Factory + On-site Door Hardware Installations
Prepping Doors to take specialised Ironmongery
Management of poor installations
Export - SADC