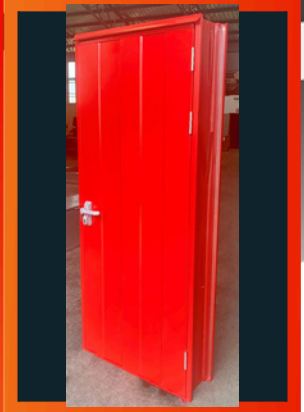
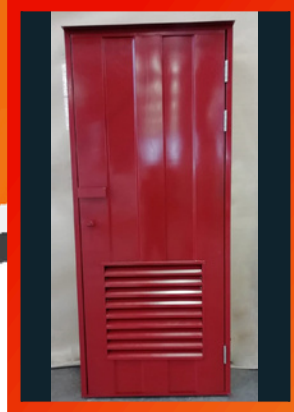




TRANSFORMER DOOR **BROCHURE**



DESCRIPTION

Stronghold manufactures both standard and customised transformer substation doors and louvres to meet your requirements. Each louvred door is factory fitted with a mesh screen/vermin proofing as a standard. Special requests such as dust filters, crawl beam cut-outs, fixed or removable transom sections, specialised ironmongery, powder coating, etc, must be discussed with our design team, prior to manufacturing. We manufacture a wide range of steel doors and are happy to work with you to fulfil your design requirements.

HINGES

The doors are fitted with 100mm heavy duty 3mm thick flanged Stainless Steel hinges.

DOOR AND FRAME

Our standard transformer doors and frames are manufactured from 1.6mm mild steel sheeting and finished in Red Oxide Primer. Galvanised doors and frames are highly recommended for coastal and other areas where corrosion and rust presents a problem.

Hot dipped galvanising is not recommended for mild steel less than 3mm thick, as this can cause the material to warp. All our frames are manufactured to fit a 230 brick wall, however can be custom-ised to suit any wall thickness or wall type. Weight - 22 kg/m².

IRONMONGERY

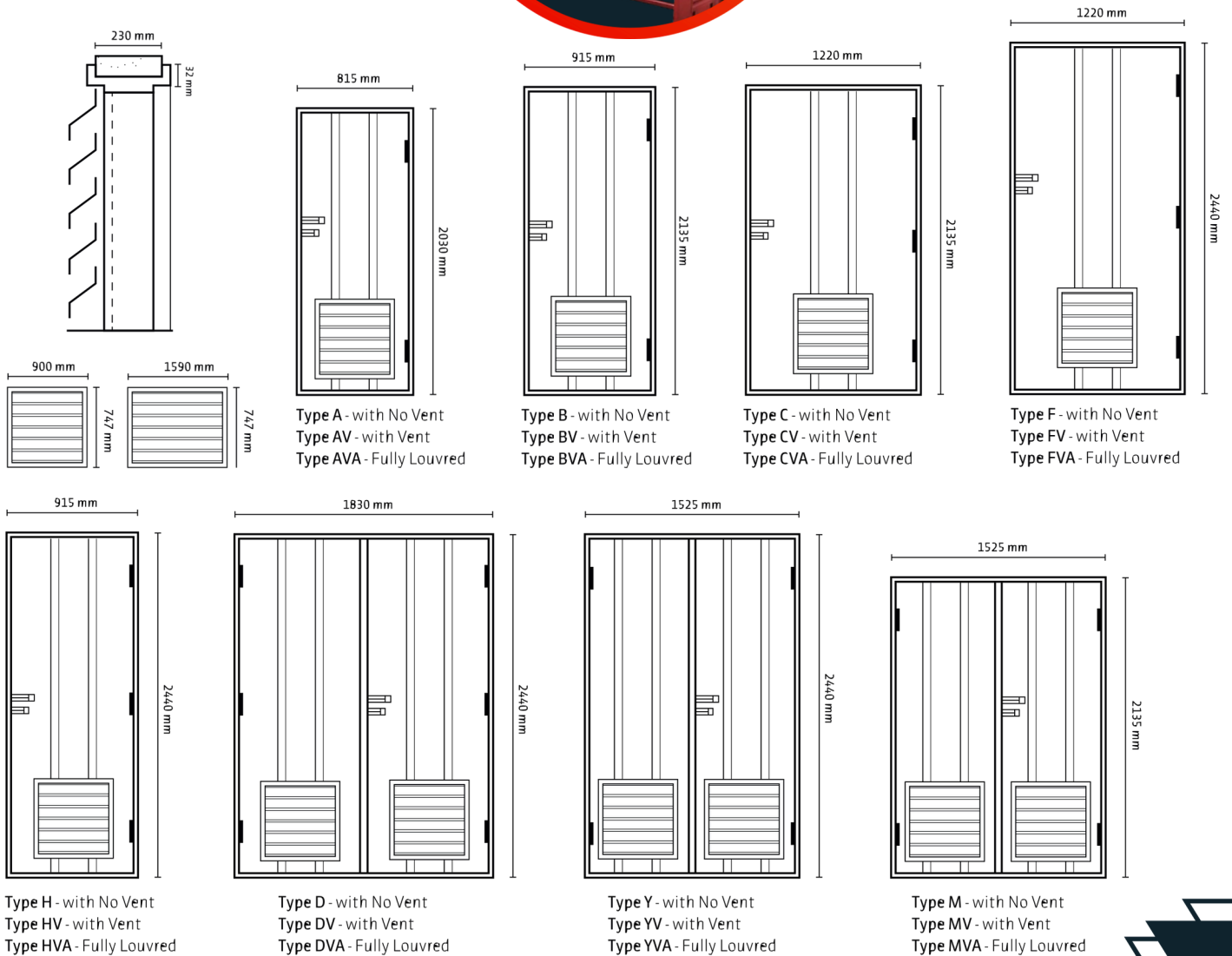
Doors come fitted with a pull handle and a pad-latch for padlocks Barrel Bolts are fitted to all double doors. Optional locks, handles and panic bolts can be supplied and fitted on request but must be discussed with our design team prior to manufacturing.

LOUVRE UNITS

Louvres are manufactured from mild steel or pre-galvanised sheeting and are fitted with mesh screen/vermin proofing. Dust filters are an optional extra which must be discussed with our design team, prior to manufacturing. Custom sizes and finishes are available on request.

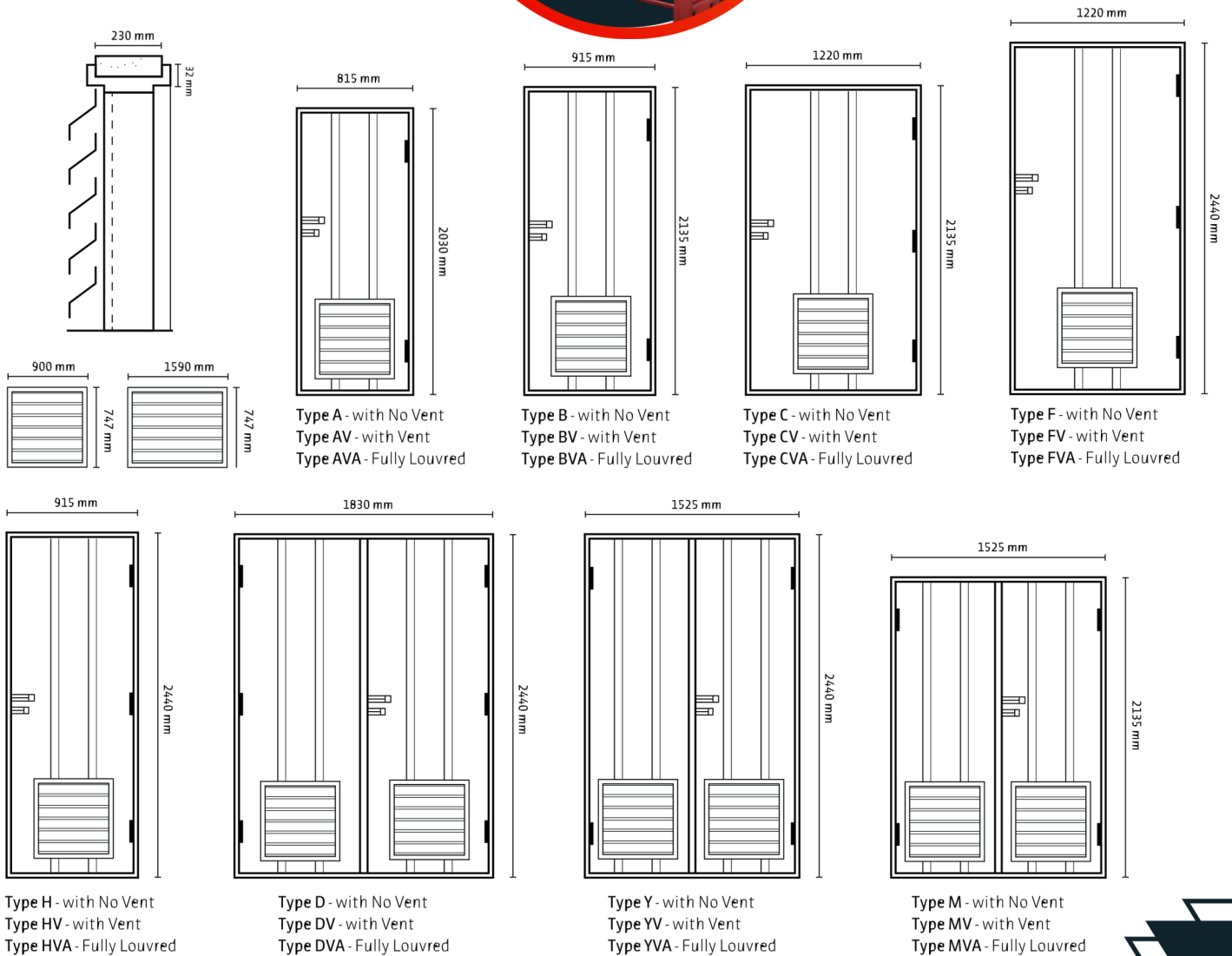


TRANSFORMER DOOR SIZES





TRANSFORMER DOOR SIZES



Business Address:
15 Derrick Rd,
Spartan, Kempton Park
1619

CONTACT INFORMATION

Postal Address: Stronghold Fire & Security cc
Postnet Suite 316
Private Bag X1
East Rand
1462

Tel: 011 822 2570

Sales Team:

Elmarie: 082 566 2913
sales@strongholdfs.co.za

Cecilia: 067 415 5833
sales1@strongholdfs.co.za

Ashkia: 082 697 6252
sales2@strongholdfs.co.za

Operations:
Trevor: 078 067 0434
ops@strongholdfs.co.za

Website: www.strongholdfs.co.za

VAT No: 4730232149

Registration No: 2006/161602/23

Products and Services

- Fire Doors • Escape Doors
- Transformer Doors • Hospital Doors
- Anti-bandit Doors • Seclusion Doors
- Lead Lined Doors • Hospitality Doors
- Steel Doors • Acoustic Doors
- Ironmongery • Insulated Doors
- Door Hardware • Security Doors

Services

Site Surveys
Fire + Escape Door Maintenance
Door Installations
Factory + On-site Door Hardware Installations
Prepping Doors to take specialised Ironmongery
Management of poor installations
Export - SADC

